

"How To..." from LABELMATE!

The World's Leading Manufacturer of Label Dispensers, Rewinders, Unwinders, Slitters & Core Chucks — October 2003

HOW TO SELECT A LABEL REWINDER

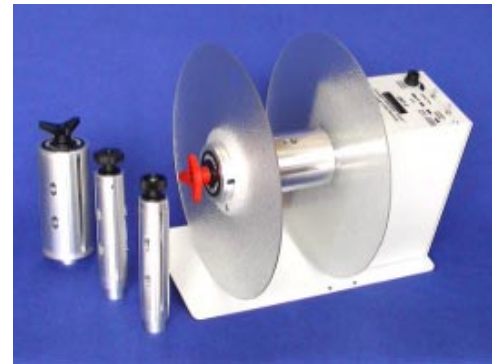
Label Rewinders are used to wind up labels into a nice roll as they come out of a thermal transfer or other printer. If you don't use a Label Rewinder, you will have to gather up the labels by hand once the printing job is finished.

It's more convenient and saves time to wind them up on a Rewinder. LABELMATE has a wide range of Rewinder models for nearly any job.

The two most important things you need to know to select a Rewinder are:

1. How wide are the labels? and,
2. How large a roll do you want to wind up?

Here's a convenient table to help you choose the best rewriter for your application.



CAT-2-CHUCK shown with various sized chucks.

—Continued on Page 2

LABEL WIDTH	ROLL DIAMETER	CHOICES	MODEL	NOTES/ COMMENT
4" or less	8.5" or less	For 3" cores	MC-10A	Up to 10 ips
		Adjustable for 1" to 4" cores	MC-11	Up to 10 ips
Up to 6"	Up to 12"	For 3" cores	CAT-2 Standard	Up to 30 ips
		Adjustable for 1" to 4" cores	CAT-2-ACH	
		For Production use or other core sizes	CAT-2-CHUCK	Choose core size
Up to 6"	Up to 16"	For 3" cores	CAT-2 R16	Chuck preferred
		For Production use or other core sizes	CAT-2-R16-CHUCK	Choose core size
Up to 10"	Up to 12"	For 3" cores	CAT-2-W10	
		For Production use or other core sizes	CAT-2-CHUCK10	Choose core size
10" to 16"	Up to 10"	For 3" cores	CAT-16	

#2 in LABELMATE's "How To..." Series

12A Sunset Way, Henderson, Nevada 89014-2002 USA

Call Toll-Free in the USA: (877) 833-7149 or (702) 435-8535 - FAX (702) 435-8536

www.labelmate.com E-mail: info@labelmate.com

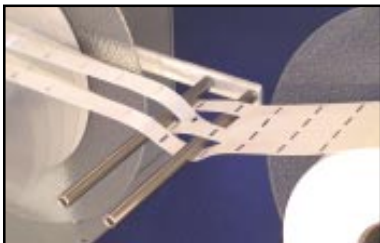
LABELMATE Europe, 69 Avenue Alphonse XIII, B-1180 Brussels, Belgium +32 (2) 375-6960 FAX +32 (2) 375-3896

HOW TO SELECT A LABEL REWINDER...

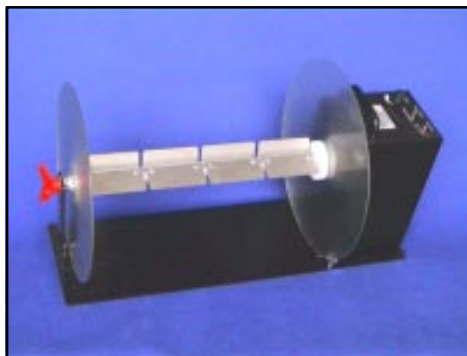
After you have narrowed down your Rewinder choice, there are some interesting options you may want to add. For example, with the MC-11 or the CAT-2-ACH, you may want to add an Adjustable Paper Guide to position the outside edge of your label roll and keep it perfectly aligned.



CAT-2-ACH-APG
This heavy-duty rewinder has an Adjustable Core Holder for any core size from 1" to 4" in diameter. It also has an optional Adjustable Paper Guide to ensure an even roll edge.



BURST-180
This Burster Bar attaches to a CAT-2-CHUCK rewinder to conveniently burst perforated tags or labels.

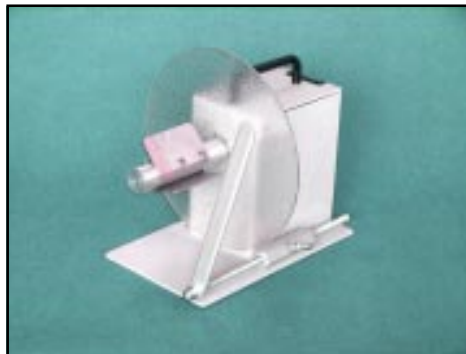


CAT-16
For really BIG jobs, the CAT-16 is our heavy-duty rewinder for 3" cores up to 16" wide. It has the same features as the CAT-2 and a Universal switching power supply for extra power.



MINICAT-11
The Minicat-11 is basically the same as the Minicat-10A, however, it has an adjustable core holder that handles 1" to 4" cores. It also does coreless rewinding!

Users of the VIP Color VP 2020 Printer will want the CAT-2-SENSOR option that automatically controls the Rewinder to keep just the right amount of tension on your label roll as it's being

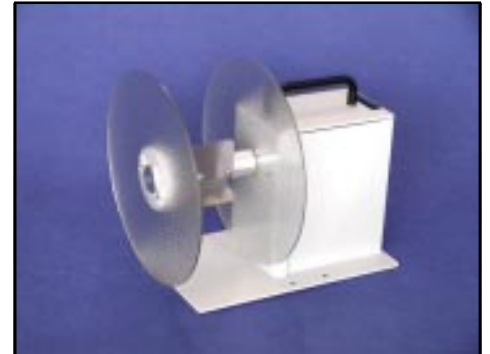


MINICAT-10A
The Minicat-10A with a 3" core is our low-cost bidirectional rewinder. This unit is fitted with an adjustable paper guide accessory which guides the outer edge of any width label web to ensure an even roll edge.



CAT-2-W10
This heavy-duty rewinder is 10" wide with 6" core holding fins. It now has extra width at no increase in price.

rewound. This is a must and the best solution in the industry for rewinding from the VP 2020.



MINICAT-10A
This Minicat 10A has an optional Outer Flange. This accessory only fits current production units.

There's also the new BURST-180 Burster Bar that's perfect for splitting perforated labels or tags as you rewind them.



CAT-2-R16
This heavy-duty standard rewinder has 3 Fins to hold the rewind core and handles a 16" roll diameter. It also includes an Inner and Outer Flange.

Check out the complete product descriptions, options and photos in the LABELMATE Product Catalog available on request in printed form or on CD-ROM (or both!). And remember, our team of Applications Engineers is available free of charge during normal business hours (7:00 A.M. to 3:30 P.M.) to consult with you and help you find the right solution for your rewinding needs. All LABELMATE Rewinders have a Limited 3-Year Parts and Labor Warranty, the longest in the industry. **LM**