

# Version 3.0

## Program Developer & Communication Software for Mobile Data Collection Devices



# ITScriptNet®

## Development Environment

### Program Design

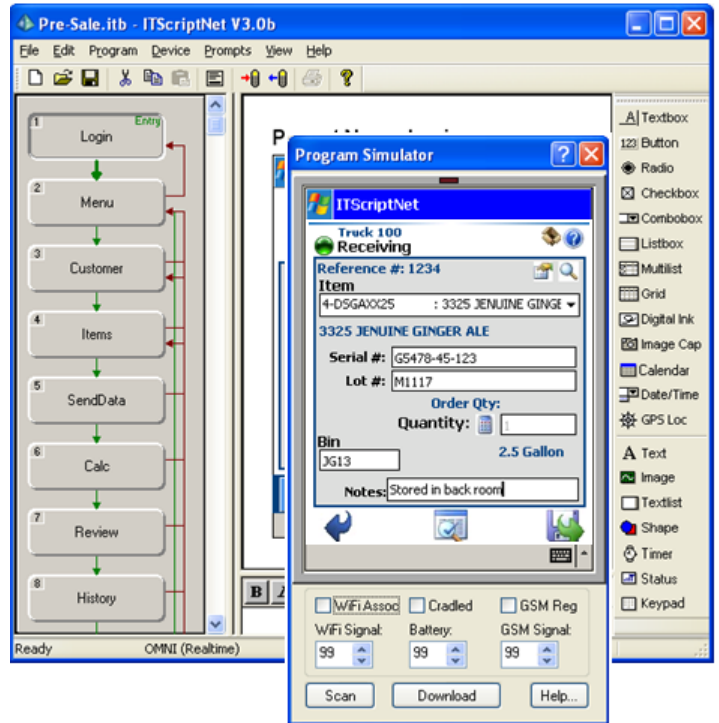
- Input controls - textbox, radio button, checkbox, combobox, data grid, digital ink, image capture, calendar & time/date picker, GPS coordinates
- Design enhancement features – use images, shapes, colors, fonts, buttons, status indicators for:
  - Battery Life
  - GSM Signal Strength
  - Progress bar
  - WiFi association status
  - Free Space
  - Numlock state
  - Shift state
  - WiFi Signal Strength
- Customize program behavior with scripts using a rich set of over 170 functions that simplify development
- Generate defined validation files from an ODBC data source to validate input
- Print to a Bluetooth®, 802.11b, IrDA or serial printer.

### Data Output to:

- Text files
- Access database
- Excel® spreadsheet
- Any ODBC data source

### Data Processing Scripts

Write VBScripts to perform additional processes on the data as it is being transferred to the server. Kick off other processes, like displaying a report, printing a document, send an email, send data to a shared site (FTP), and calling COM and .Net components. These scripts provide near limitless capabilities within ITScriptNet.



## Communication

### Connection Methods

#### Batch

Connect to local PC with a cradle or cable using ActiveSync

#### Wireless

Local Area Network - WLAN – WiFi - 802.11b/g

Wide Area Network – WWAN - GPRS/GSM (cell phone)

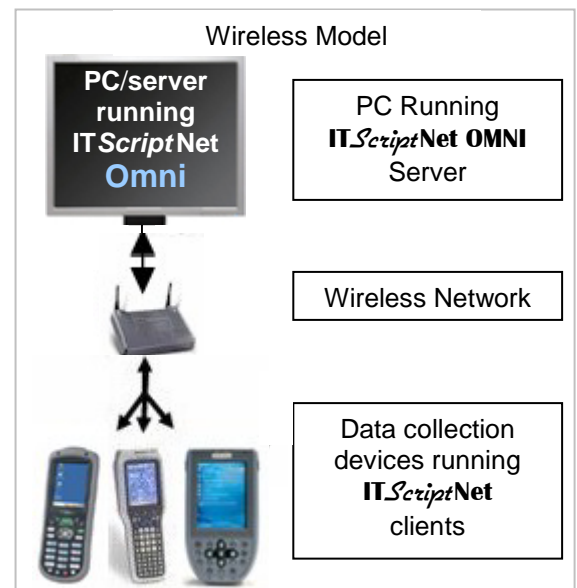
### Data Transfer Methods

#### Batch

- Through the menus on the device and PC
- AutoDownload – place the device in the cradle, data is sent automatically. Program and validation files can be automatically reloaded.
- DL Server – manually control transfer with buttons in the data collection program

#### Wireless

- Manual – control when collected data is sent to the server with controls and functions, both batch and wireless.
- RF – Make a wireless connection to send the data. If the connection fails, either retry the connection or exit the program.
- Hybrid – If a wireless connection is not made, saves the data to the device for later transmission.



# Features



## ITScriptNet Key Design Features.

- **New!** Use SQL CE on the device
- **New!** Image, signature line, & text rotation
- **New!** GPS breadcrumb trail
- Capture GPS coordinates\*
- Print to wireless printers\*
- Display battery life and other indicators
- Scan & parse 2D codes\*
- Capture signatures (sign on glass)
- Take pictures\*
- Use shapes, colors and images
- Validate input against a file
- AutoTransfer data when device is cradled
- Program hot keys\*
- Play .wav files, Beep and Buzz\*
- Write VBScripts for add'l processing - send data to multiple output formats, send email, print reports, run other logic and more
- Password protect the program
- **New!** Create validation file from a csv file
- **New!** New elements: calendar, date/time picker, keypad, various status displays
- **New!** Color gradient for buttons and shapes
- **New!** 20 new functions!
- Select input from dropdown list
- Lock user into data collection only
- Display collected data in a grid
- Edit and delete collected data
- Checkboxes and radio buttons
- 2 licensing models – PC or Device
- Design programs to run on the PC
- Simulate program operation on the PC
- Output to Excel, Access, text files or ODBC source
- Fully test the design, operation and data transfer from device in demo mode

The following **real time** features are activated with the purchase of an **ITScriptNet OMNI** license.

- Send a file from the device to the server
- Store data on device until wireless connection is made (Store & Forward)
- Retrieve a file from the server
- Execute a VBScript remotely on the server
- Execute a SQL statement remotely on the server
- Load ITScriptNet programs from the server
- Connect via 802.11b/g\*
- Connect via GSM/GPRS (cell phone)\*
- Connect via modem
- Connect to server over the internet via local ActiveSync PC connection
- Load ITScriptNet programs from the server
- Control timing of sending data to server

Below is a small sampling of common applications where **ITScriptNet** has been used.

- Asset Tracking
- Check In/Out
- Disaster site personnel mgmt
- Food Safety Audit
- Inventory Control
- Package Delivery
- Pallet Tracking
- Physical Inventory
- Quality Control
- Route Accounting
- Shipping/Receiving
- Showroom Order Entry

\* With properly equipped device

Visit our web site for:  
- Demo versions of all products  
- List of supported devices  
- System requirements  
- User Guides  
- Support



[www.z-space.com](http://www.z-space.com)

© 2009 Z-Space Technologies, Inc. All rights reserved.